



▲
PRESTO-H/R
AMBAR-C/P
D.ROMANTIC-S

ING.PRESTO-H/32/R P-50 (2x32)



PRESTO-H/R B-29 (32x90)
PRESTO-H B-21 (33x91)



ADAGIO-H/R B-24 (32x59)
ADAGIO-H B-16 (33x60)



ANDANTE-H/R B-22 (32x32)
ANDANTE-H B-9 (33x33)
(4-1-H)***

ING.CONCERTO-H/32/R P-50 (2x32)



CONCERTO-H/R B-29 (32x90)
CONCERTO-H B-21 (33x91)



ALLEGRO-H/R B-24 (32x59)
ALLEGRO-H B-16 (33x60)



VIVACE-H/R B-22 (32x32)
VIVACE-H B-9 (33x33)
(4-1-H)****

ING.SCHERZO-B/32/R P-50 (2x32)



SCHERZO-B/R B-29 (32x90)
SCHERZO-B B-21 (33x91)



OPERA-B/R B-24 (32x59)
OPERA-B B-16 (33x60)



LENTO-B/R B-22 (32x32)
LENTO-B B-9 (33x33)
(4-1-H)****

ING.SCHERZO-N/32/R P-50 (2x32)



SCHERZO-N/R B-39 (32x90)
SCHERZO-N B-22 (33x91)



OPERA-N/R B-25 (32x59)
OPERA-N B-19 (33x60)



LENTO-N/R B-23 (32x32)
LENTO-N B-14 (33x33)
(2-1)***

32 x 59 x 1,05 cm. / 12,6" x 23,2"
32 x 90 x 1,05 cm. / 12,6" x 35,4"



JUNTA 0-1 mm



HIGIÉNICO



BRILLO



RECTIFICADO



VARIAS GRÁFICAS



SCHERZO-B/R
SCHERZO-N/R
D.VITRA GOLD
LENTO-B/R
LENTO-N/R





revestimiento pasta blanca - rectificado

symphony colección



BASIC-W/R B-29 (32x90)
BASIC-W B-21 (33x91)



LOGIC-W/R B-24 (32x59)
LOGIC-W B-16 (33x60)



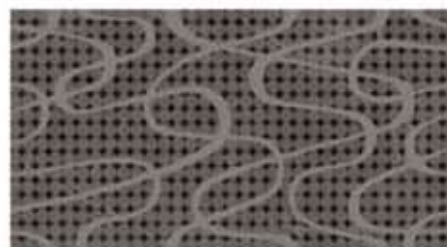
D.NADIA-B/90/R P-81 (32x90)



D.NADIA-B/59/R P-71 (32x59)



D.NADIA-N/90/R P-81 (32x90)



D.NADIA-N/59/R P-71 (32x59)



ARTIST-A/90/R B-39 (32x90)
ARTIST-A/91 B-22 (33x91)



ARTIST-A/59/R B-25 (32x59)
ARTIST-A/60 B-19 (33x60)



C.ARTIST-A/90/R P-41 (8x90)
C.ARTIST-A/91 P-36 (8x91)



C.ARTIST-A/59/R P-23 (8x59)
C.ARTIST-A/60 P-19 (8x60)



C.BOVARY/32/R P-37 (7x32)
C.BOVARY/33 P-36 (7x33)



C.ARTIST-A/32/R P-11 (6x32)
C.ARTIST-A/33 P-9 (6x33)



D.VITRA-GOLD P-62
(27,5x31,8)



D.VITRA-WHITE P-60
(27,5x31,8)



D.VITRA-BLACK P-60
(27,5x31,8)

32 x 59 x 1,05 cm. / 12,6" x 23,2"
32 x 90 x 1,05 cm. / 12,6" x 35,4"



JUNTA 0-1 mm



HIGIENICO



BRILLO



RECTIFICADO



VARIAS GRAFICAS



CONCERTO-H/R
D.PARDO-H/90/R ▶



revestimiento pasta blanca - rectificado

symphony colección



D.PARDO-H/90/R P-75 (32x90)



D.PARDO-H/59/R P-77 (32x59)

L.SYMPHONY-B/90/R P-68 (1,5x90)

L.SYMPHONY-G/90/R P-68 (1,5x90)

L.SYMPHONY-M/90/R P-68 (1,5x90)

L.SYMPHONY-B/59/R P-60 (1,5x59)

L.SYMPHONY-G/59/R P-60 (1,5x59)

L.SYMPHONY-M/59/R P-60 (1,5x59)

L.LULA-O/R P-69 (2,5x59)

L.LULA-P/R P-69 (2,5x59)

M.STEEL/90 P-60 (5x90)

C.CLASS-N P-66 (3x66)



32 x 59 x 1,05 cm. / 12,6" x 23,2"
32 x 90 x 1,05 cm. / 12,6" x 35,4"



JUNTA 0-1 mm



HIGIÉNICO



BRILLO



RECTIFICADO



VARIAS GRÁFICAS





revestimiento pasta blanca - rectificado

symphony colección



D.KALEI/90/R P-81 (64x180)
D.KALEI/91 P-61 (66x182)



D.SCOOP/90/R P-60 (32x90)
D.SCOOP/91 P-51 (33x91)



D.KALEI/59/R P-78 (64x118)
D.KALEI/60 P-66 (66x120)



D.SCOOP/59/R P-50 (32x59)
D.SCOOP/60 P-44 (33x60)





revestimiento pasta blanca - rectificado

symphony collection



C.SYMPHONY-B/R P-62 (8x32)



M.SYMPHONY-B/R P-60 (5x32)



CUADRO SYMPHONY-B P-93 (64x90)



CAPITEL SYMPHONY-B P-74 (26x35)

INICIO COL SYMPHONY-B/R P-86 (25x38)

MEDIA COL SYMPHONY-B P-80 (25x64)



COLUMNA SYMPHONY-B P-84 (25x256)





◀ SCHERZO-B/R
SCHERZO-N/R
C. BOBARY/32/R

▲ PRESTO-H/R
M. PRESTO-H/20/R
M. PRESTO-H/10/R



revestimiento pasta blanca - rectificado

symphony collección



M.PRESTO-H/20/R P-47 (20x32)
M.PRESTO-H/20 P-47 (20x33)



ANG.M.PRESTO-H/20
P-64 (1x20)



M.SCHERZO-B/20/R P-47 (20x32)
M.SCHERZO-B/20 P-47 (20x33)



ANG.M.SCHERZO-B/20
P-64 (1x20)



C.MYLADY-P P-80 (15x59)



M.PRESTO-H/10/R P-37 (10x32)
M.PRESTO-H/10 P-37 (10x33)



ANG.M.PRESTO-H/10
P-60 (1x10)



M.SCHERZO-B/10/R P-37 (10x32)
M.SCHERZO-B/10 P-37 (10x33)



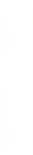
ANG.M.SCHERZO-B/10
P-60 (1x10)



T.I.MYLADY-P P-82
(15x25)



M.CONCERTO-H/20/R P-47 (20x32)
M.CONCERTO-H/20 P-47 (20x33)



ANG.M.CONCERTO-H/20
P-64 (1x20)



M.SCHERZO-N/20/R P-47 (20x32)
M.SCHERZO-N/20 P-47 (20x33)



ANG.M.SCHERZO-N/20
P-64 (1x20)



C.MYLADY-O P-80 (15x59)



M.CONCERTO-H/10/R P-37 (10x32)
M.CONCERTO-H/10 P-37 (10x33)



ANG.M.CONCERTO-H/10
P-60 (1x10)



M.SCHERZO-N/10/R P-37 (10x32)
M.SCHERZO-N/10 P-37 (10x33)



ANG.M.SCHERZO-N/10
P-60 (1x10)



T.I.MYLADY-O P-82
(15x25)



D.AMAN/59/R P-78 (32x59)
D.AMAN/60 P-71 (33x60)





SCERZO-B/R
SCERZO-N/R
C.NASTIA-N/R
M.NASTIA-N/R
T.I.NASTIA-N
D.SCHERZO-B/R ▶



C.NASTIA-N/R P-51 (10x32)
C.NASTIA-N P-50 (10x33)



M.NASTIA-N/R P-47 (3,5x32)
M.NASTIA-N P-45 (3,5x33)



T.I.NASTIA-N P-44
(12x19,5)



C.NASTIA-B/R P-51 (10x32)
C.NASTIA-B P-50 (10x33)



M.NASTIA-B/R P-47 (3,5x32)
M.NASTIA-B P-45 (3,5x33)



T.I.NASTIA-B P-44
(12x19,5)



D.PRESTO-H/R P-52 (32x90)
D.PRESTO-H P-64 (33x91)



D.CONCERTO-H/R P-52 (32x90)
D.CONCERTO-H P-64 (33x91)



D.SCHERZO-B/R P-52 (32x90)
D.SCHERZO-B P-64 (33x91)



D.SCHERZO-N/R P-52 (32x90)
D.SCHERZO-N P-64 (33x91)



D.ADAGIO-H/R P-53 (32x59)
D.ADAGIO-H P-51 (33x60)



D.ALLEGRO-H/R P-53 (32x59)
D.ALLEGRO-H P-51 (33x60)



D.OPERA-B/R P-53 (32x59)
D.OPERA-B P-51 (33x60)



D.OPERA-N/R P-53 (32x59)
D.OPERA-N P-51 (33x60)



▲
 CLAYS-B
 CLAYS-L
 CLAYS-Na
 CLAYS-V
 ELEGANCE-G



CLAYS-B B-17
 (20x50)



CLAYS-N B-19
 (20x50)



CLAYS-V B-17
 (20x50)



CLAYS-Na B-19
 (20x50)



CLAYS-Bc B-17
 (20x50)



CLAYS-L B-19
 (20x50)



CLAYS-G B-17
 (20x50)



CLAYS-A B-19
 (20x50)



- ▲ CLAYS-B
- CLAYS-N
- D.ISLAND
- CENTRAL PARK-G



VIVACITY-B B-9 (33x33)
(4-0-H)****



VIVACITY-N B-14 (33x33)
(2-0-H)***



VIVACITY-V B-9 (33x33)
(3-0-H)***



VIVACITY-Na B-9 (33x33)
(3-0-H)***



VIVACITY-Bc B-14 (33x33)
(2-0-H)***

20 x 50 x 1,05 cm. / 8" x 20"



SATINADO



HIGIENICO



CLAYS-B
CLAYS-A
D.POPPY
VIVACITY-B ▶



C.NOUELLE
D.NOUELLE/3
L.CLAYS-N
CLAYS-B
CLAYS-V



CLAYS-B
CLAYS-V
VIVACITY-B
D.CUISINE
C.CUISINE



▲
D.VICTORIAN
CLAYS-B





*D.ISLAND P-51
(20x50)



C.WAVE P-62
(10x30)



D.VICTORIAN P-61
(20x50)



*D.CUISINE P-56
(20x50)



*D.POPPY P-62
(20x50)



D.NOUELLE/3 P-64
(20x50)



C.CUISINE P-25
(3x50)



D.NOUELLE/1 P-64
(20x50)



L.CLAYS-L P-50
(2,5x50)



L.CLAYS-A P-50
(2,5x50)



C.NOUELLE P-50
(6x50)



L.CLAYS-N P-50
(2,5x50)



L.CLAYS-B P-50
(2,5x50)



L.CLAYS-Bc P-50
(2,5x50)



L.CLAYS-G P-50
(2,5x50)



L.CLAYS-P P-68
(2,5x50)



L.CLAYS-V P-50
(2,5x50)



L.CLAYS-Na P-50
(2,5x50)

M.STEEL/90 P-60 (5x90)



revestimiento pasta roja

il divino coleccion





C.HADES P-47 (4x30)



M.HADES P-38 (2,5x23)



T.I.ARIADNA-O P-81 (20x20)



T.I.ARIADNA-M P-81 (20x20)



T.I.CIBELES-M P-82 (20x32)



T.I.CIBELES-O P-82 (20x32)



C.HEBE-M P-41 (8x23)



L.HEBE-M P-36 (4x23)



E.HEBE-M P-37 (8x8)



T.I.HEBE-M P-35 (8x8)



C.HEBE-O P-41 (8x23)



L.HEBE-O P-36 (4x23)



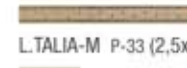
E.HEBE-O P-37 (8x8)



T.I.HEBE-O P-35 (8x8)



C.TALIA-M P-41 (8x23)



L.TALIA-M P-33 (2,5x23)



E.TALIA-M P-37 (8x8)



T.I.TALIA-M P-35 (8x8)



C.TALIA-O P-41 (8x23)



L.TALIA-O P-33 (2,5x23)



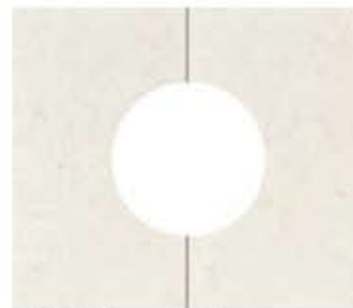
E.TALIA-O P-37 (8x8)



T.I.TALIA-O P-35 (8x8)



D.ARIADNA-O P-49 (46x40)



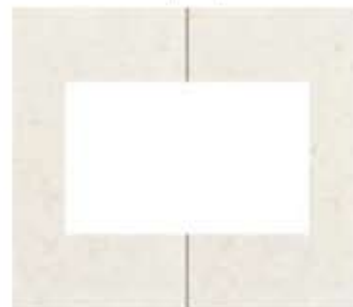
D.ARIADNA-B P-49 (46x40)



D.ARIADNA-M P-49 (46x40)



D.CIBELES-O P-51 (46x40)



D.CIBELES-B P-51 (46x40)



D.CIBELES-M P-51 (46x40)



HERMES-O B-9 (4-0-H)***
(33x33)



HERMES-B B-9 (4-0-H)***
(33x33)



HERMES-M B-9 (4-0-H)***
(33x33)



revestimiento pasta roja

il divino colocación



L.D. HERMES P-62
(33x33)



E.D. HERMES P-62
(33x33)



ROS.HERMES P-72
(66X66)



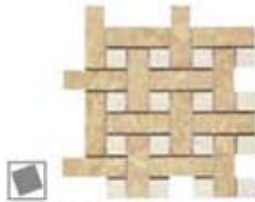
C. HERMES P-46
(9,5X33)



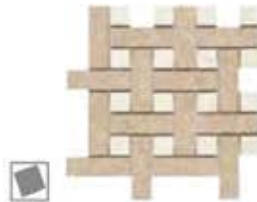
E.HERMES P-37
(9,5X9,5)



L.HERMES/50 P-21
(0,5X50)



D.HERMES-O P-51
(26x26)

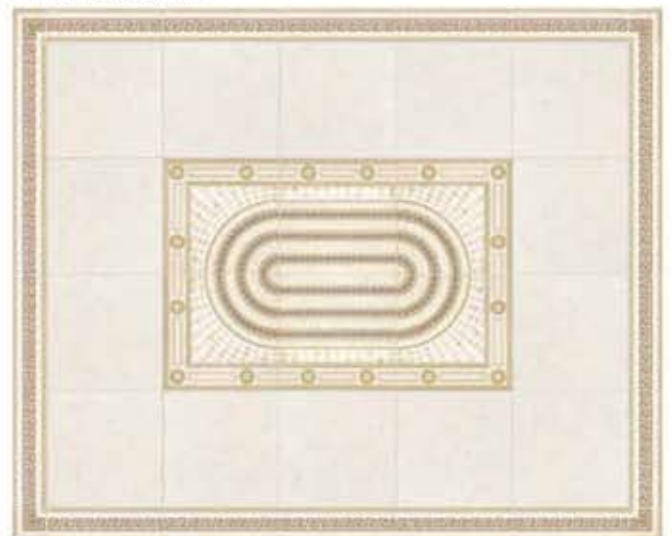


D.HERMES-M P-51
(26x26)

EJEMPLO COLOCACIÓN:



EJEMPLO COLOCACIÓN:



23 x 40 x 0,90 cm. / 9" x 15,7"



MATE



HIGIÉNICO



VARIAS GRÁFICAS





revestimiento pasta roja

il divino coleccion



CAPITEL REGENCY P-89 (34x45)

MEDIA COL. REGENCY P-90 (35,7x25,8)

INICIO COL. REGENCY P-90 (35,7x25,8)

BASE REGENCY P-80 (19x33)

COLUMNA REGENCY P-95 (178,5x25,8)



CUADRO REGENCY P-91 (60x99)



ESPEJO REGENCY P-84 (80x125)



SUPLEMENTO NINFA P-71 (14,5x15,5)



NINFA REGENCY P-93 (31x82)



REPISA REGENCY P-80 (11X46)



TOALLERO REGENCY P-76 (8X62)



LAVABO REGENCY P-92 (140x49)



PORTAPAPEL REGENCY P-75 (18X18)



PERCHA REGENCY P-69 (16X8)



JABONERA REGENCY P-54 (4X15)

Decorados producidos artesanalmente, por lo que pueden tener pequeñas variaciones en tonos y calibres.

Hand made decors, that is the reason why there may appear some shade and caliber variations.

Декоративные элементы выполнены художественной студией вручную, поэтому могут немного отличаться тоном и калибром.